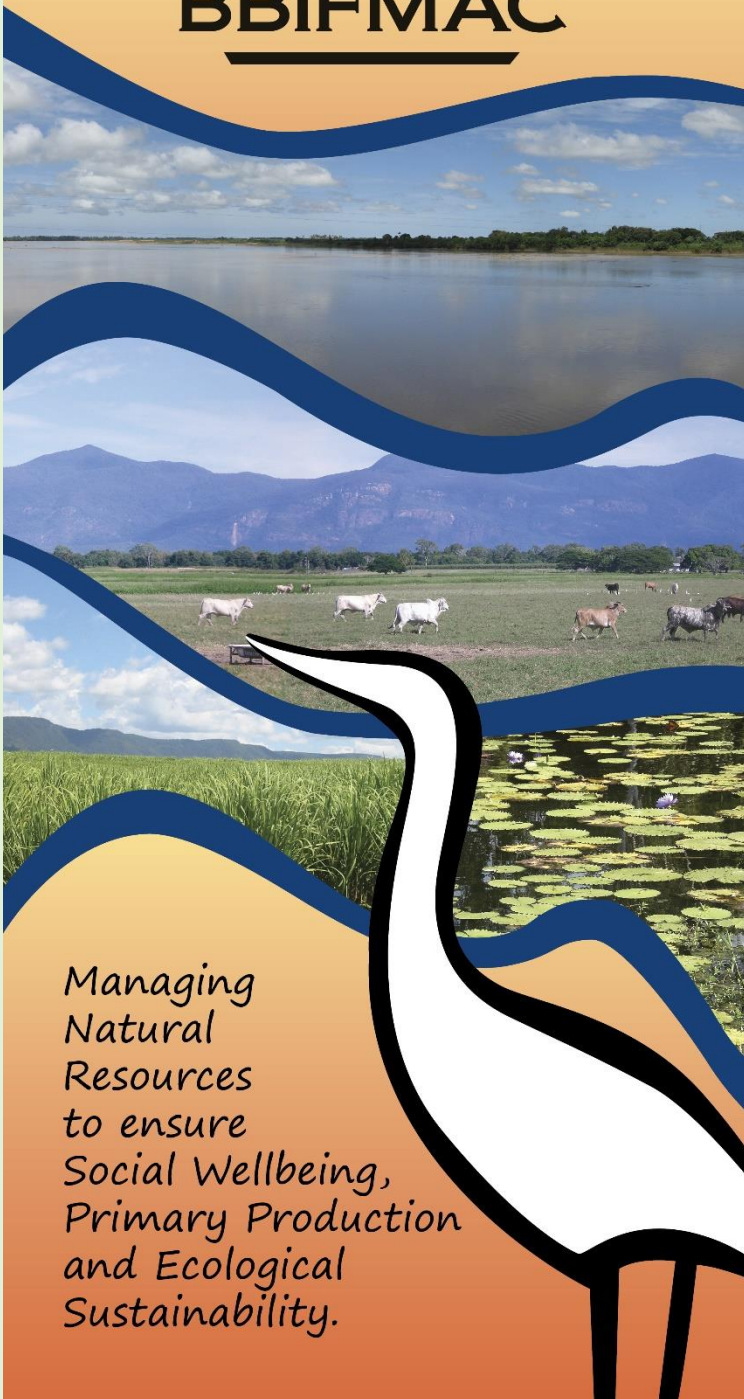


# NEWSLETTER



**BBIFMAC**



*Managing Natural Resources to ensure Social Wellbeing, Primary Production and Ecological Sustainability.*



Issue 1 17/12/2019.

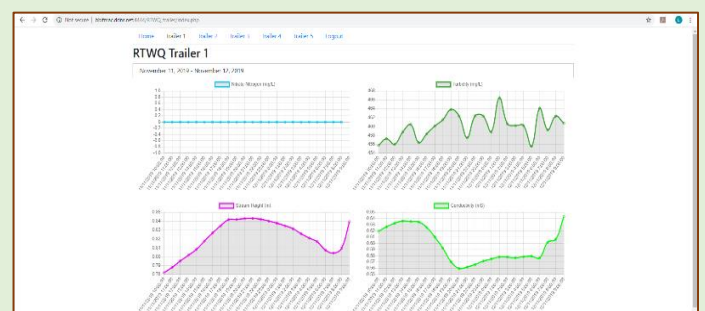
## What's New?

This newsletter! This is the first release of the BBIFMAC quarterly newsletter to keep our members up to date on our work, results and upcoming events.

BBIFMAC has been busy with many new and existing projects in the area. Dennis Stubbs, our Field Officer has just finished installing San Dimas water discharge flumes all up and down the coast from Proserpine to Babinda for various clients. The purpose of the flume installation is to assist in calculations of water volumes and nutrient flux discharged from monitored paddocks.



Our Technical Officer, Luke Buono, has developed a real time water quality website to be used at sites where nitrate and turbidity spectrometer equipment is installed. This gives access to fast, reliable and low-cost data and remote trouble-shooting of the equipment.





## Recent Events

In late September, BBIFMAC hosted a field visit to the Barratta Constructed Wetland Treatment System to explain its concept, design and function. The aim of this constructed wetland is to reduce key agricultural pollutants commonly found in sugar cane irrigation tail-water, before they enter Barratta Creek and ultimately the Great Barrier Reef. A constructed wetland aims to mimic the conditions of a natural wetland, and hence the design incorporates simple hydrological features to maximise water detention and holding periods. Local native plants were introduced to the wetland to create a biological environment that is necessary for the treatment of irrigation tail water. BBIFMAC monitors the water quality at inlet and outlet points to establish the extent to which water quality improvements can be attributed to the wetland treatment system.



## Meet the BBIFMAC team!



We would like to take the opportunity to introduce one of our great BBIFMAC team members with each newsletter.

We will start by introducing Arwen, BBIFMAC manager. Arwen joined the team in 2014 and has been the BBIFMAC manager for the last three years. She brings a large amount of knowledge and passion, having grown up on a cane farm in Bundaberg and obtaining a Masters Degree from JCU. Arwen has worked within natural resource management and environmental planning in the Townsville, Ingham and Burdekin areas for the past 20 years.



The BBIFMAC office will be closed from the 20<sup>th</sup> December to the 6<sup>th</sup> January.

We wish you all the best for a safe and happy Christmas period.

## Become a BBIFMAC member!

**JOIN NOW FOR JUST \$20 PER YEAR.**

BBIFMAC members receive:

- ❖ Free or discounted water quality tests.
- ❖ Discounted water quality monitoring equipment.
- ❖ Information and assistance with grants.
- ❖ Invitations to key events of interest around the region.



Follow us on Facebook at **Bbifmac Inc**

Visit our website <https://bbifmac.org.au/>